

# EliZea



Silage Maize



## Maximize Yield and Forage Quality Even Under Water Stress with EliZea

EliZea is an innovative biosolution powered by phytosterols, natural molecules that, when applied preventively, strengthen the plant's resilience to water stress.

By activating the plant's own resistance pathways, EliZea helps preserve growth and grain formation during critical dry periods. The result: better water use efficiency, reduced stress impact, and higher yield potential maintained through to harvest.



**Savings**  
Reduces water requirements



**Resilience**  
Single application with a lasting effect



**Performance**  
Enhances your yields and forage quality

Enhances root growth, allowing better access to soil water resources

Optimizes water use to support active growth



Delivers higher and more vigorous biomass, securing forage volume and feed supply

Improves forage quality through higher dry matter, increased starch, and enhanced feed value

Dry matter up to  
**+2 t/ha**

Up to  
**+20 cm**

Up to  
**+7 days stay green**

Maximizes volumes, optimizes qualitative criteria, and increases kernel production and flexibility during harvest  
Gains observed in 2019-2024

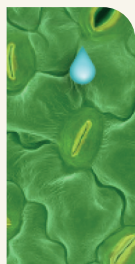
## Long-lasting effects with proven results

Key effects of EliZea observed until harvest

- 1 Partial stomatal closure for less evapotranspiration
- 2 Root development
- 3 Stay green effect
- 4 Bigger biomass
- 5 Increased spike size



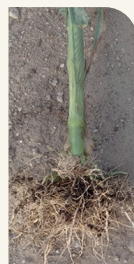
Control



EliZea



Control



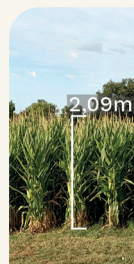
EliZea



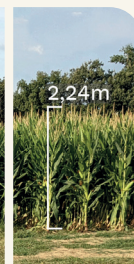
Control



EliZea



Control



EliZea



Control



EliZea



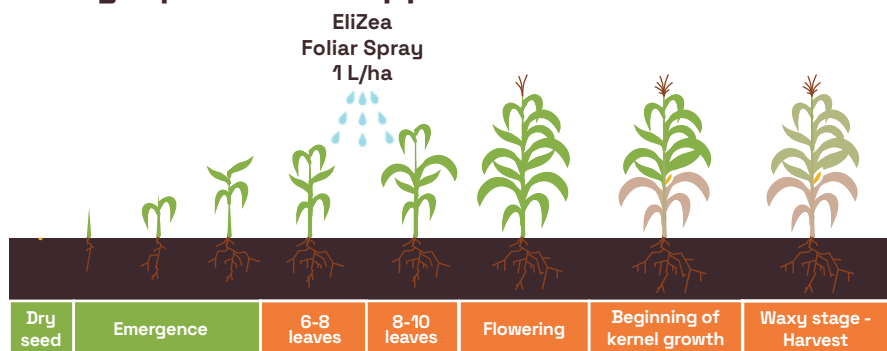
- ▶ Product Category: Plant biostimulant
- ▶ Contains: Phytosterols
- ▶ Formulation: SE
- ▶ Type of application: foliar spray
- ▶ Excellent safety profile
- ▶ Packaging: 5L, 20L

## Key considerations and Best practices

- ▶ Use on well-drained soils in summer
- ▶ Adhere to the application protocol including dosage and growth stage

EliZea is designed for application on healthy plants, without deficiencies in nitrogen, phosphorus, or other essential elements.

## A single preventive application



## Application Protocol



**1**  
Stir the canister and add EliZea to the pre-filled tank at 1/3 capacity, 1L per hectare



**2**  
Top up with water to reach a final volume of the appropriate spray mixture



**3**  
Circulate the spray mixture to ensure uniformity



**4**  
Spray at 6-10 leaves stage (BBCH 16-19)\*

## Recommended conditions of use

Crop	Dose (L/ha)	Number of applications / year	Application stage
Maize	1	1	6 - 10 leaves BBCH stage 16-19

## Usage Guidelines

- ▶ Can be tank-mixed with fungicides, insecticides and certain herbicides. For further information regarding compatibility concerns, please consult with your technical advisor.
- ▶ Application should be made in growing conditions: no wind, humidity higher than 60%, temperature between 5°C and 25°C..

\*Adhere to a 2-hour rain-free period.



ELICIT PLANT - 1 passage de la Croix - Le Châtaignier  
16220 MOULINS-SUR-TARDOIRE - France

**EliZea®:** Liquid Suspo-emulsion (SE) containing phytosterols. Produced and distributed by: Elicit Plant SAS - Authorized crops and uses: maize. EliZea® is a non-microbial plant biostimulant (PFC 6.B) aiming to increase yields under drought stress conditions. Maximum dose: 1l/ha. Maximum number of applications: 1/year (growth stages BBCH 16-19). CE DE.3091

**Classification:** Product not classified according to Regulation (EC) No 1272/2008. **Safety instructions:** P101: If medical advice is needed, have product container or label at hand. P102: Keep out of reach of children. P262: Avoid contact with eyes, skin or clothing. P270: Do not eat, drink or smoke while using this product. P280: Wear protective gloves/protective clothing/eye protection/face protection. P273: Avoid release to the environment. P501: Dispose of contents/container in accordance with local regulations.